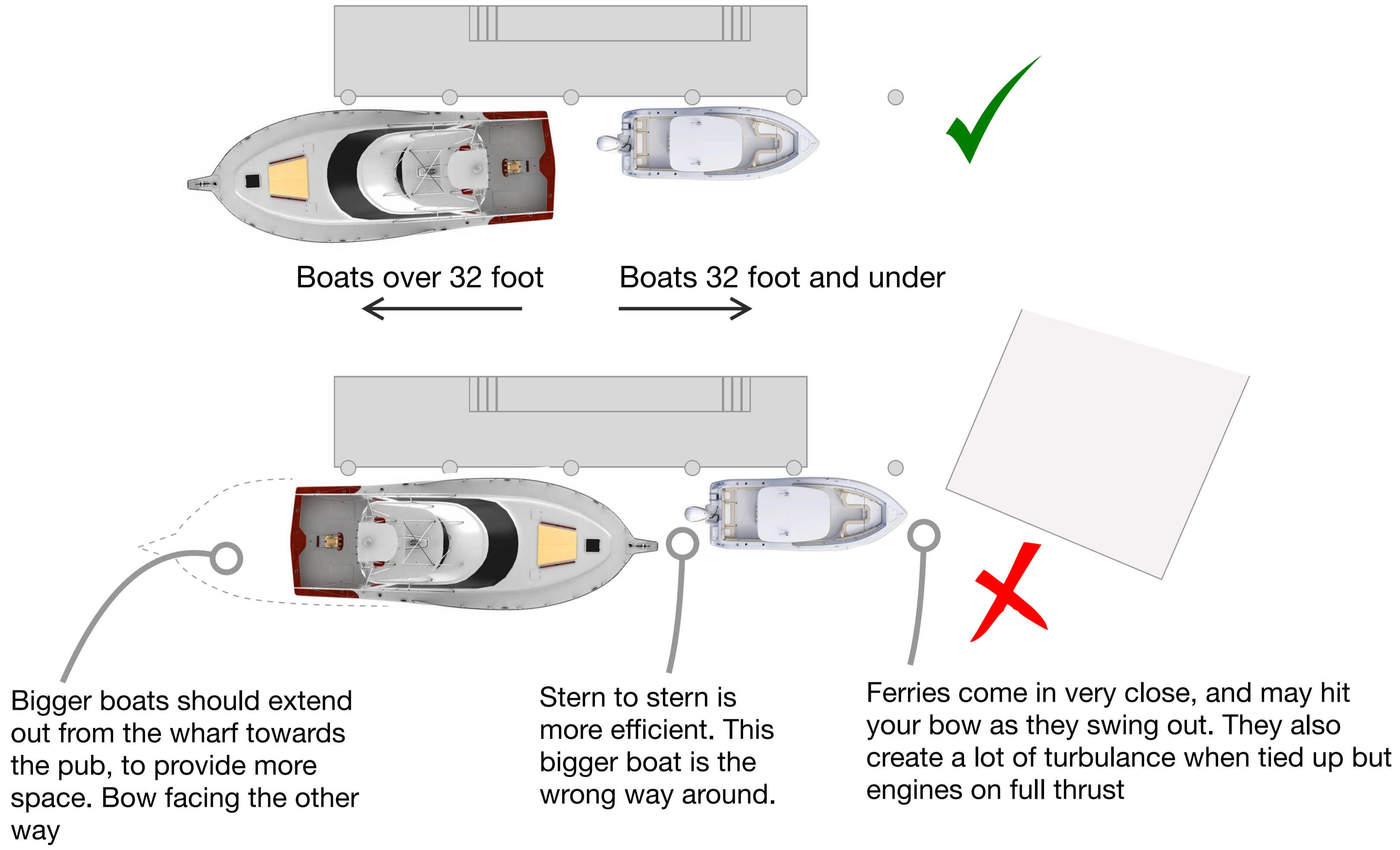
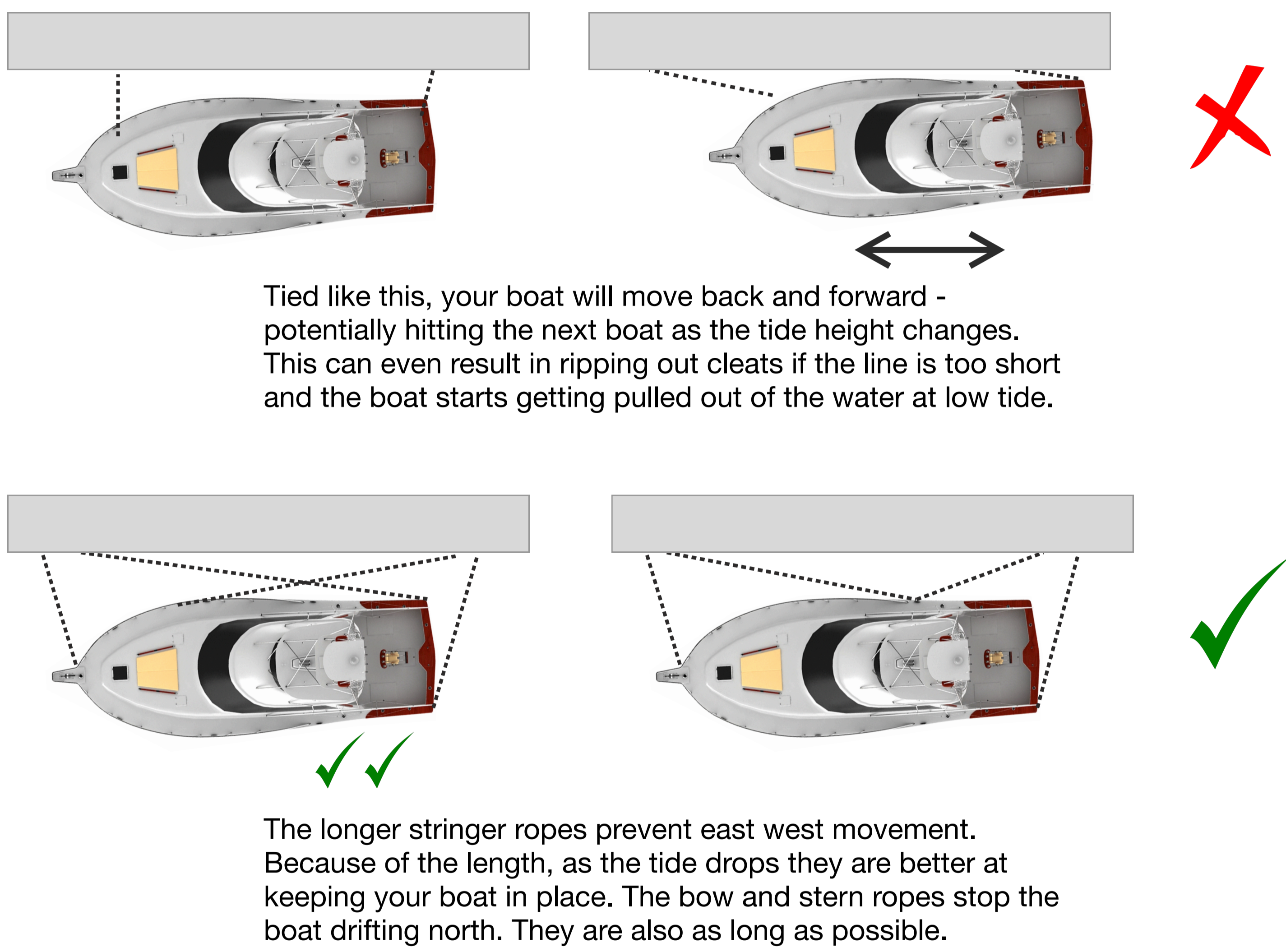


# SGFC wharf etiquette

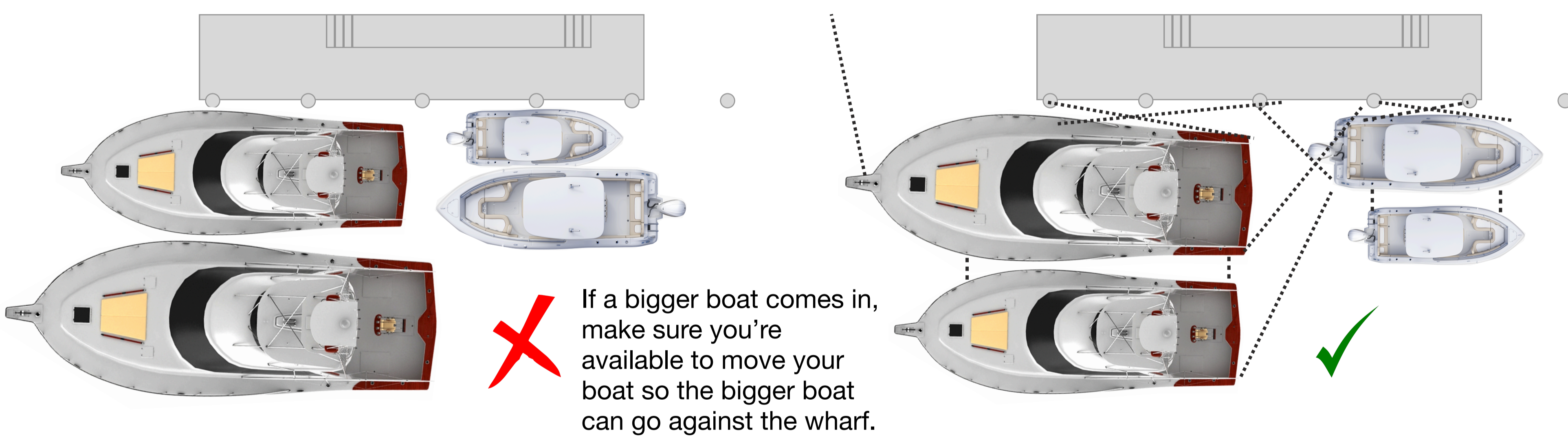
## Where do I tie up?



## How do I tie up?



## Rafting up - bigger boats against the wharf, stern to stern



## Don't forget

- ✓ If you tie up to another boat, send them a message with your details, or write them up on the whiteboard
- ✗ If you're not fishing, don't leave your boat there all weekend - we all need to use the berths.
- ✓ Come back and check your boat regularly - especially with strong winds or big tides.
- ✗ If your boat has outboards, leave them down in the water. Otherwise they can damage other boats.
- ✓ If a boat comes in with fish, they may need to unload or weigh. If your boat isn't a fishing boat, stick around so you can move it quickly
- ✓ If you see a boat coming in, offer to help them tie up. Especially when it's windy, this can be a challenge!
- ✓ If you do adjust someone's ropes, try to let them know so they are aware. And hopefully tie up better next time.